

# #30VTS

## *ventus*

COMPACT  
2019



[www.vtsgroup.com](http://www.vtsgroup.com)

# VENTUS COMPACT SUSPENDED AIR HANDLING UNITS



up to **92%**  
recovery efficiency



HIGHLY EFFICIENT  
HEX COUNTERFLOW  
RECOVERY



ENERGY SAVING  
AND SILENT  
EC MOTORS



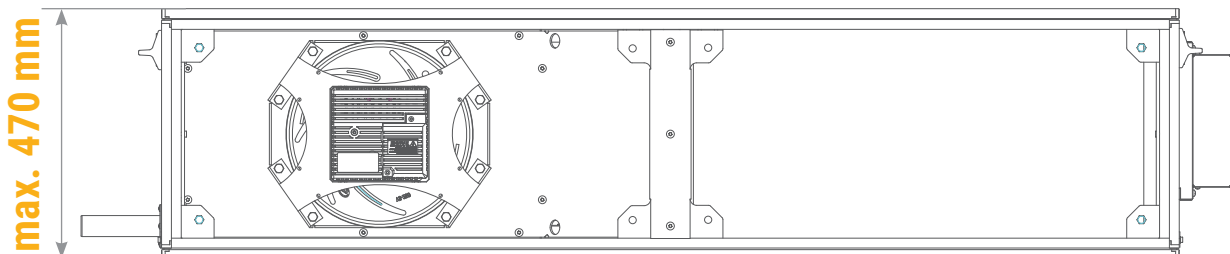
WIRING AND  
CONFIGURATION  
IN PLUG&PLAY  
STANDARD



INTEGRATED  
MULTIFUNCTIONAL  
CONTROLS



MINI-PLEAT  
PANEL FILTERS



# VENTUS COMPACT FLOOR MOUNTED AIR HANDLING UNITS



up to **86%**  
recovery efficiency



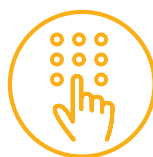
HIGHLY EFFICIENT  
ROTARY HEAT WHEELS



ENERGY SAVING  
AND SILENT  
EC MOTORS



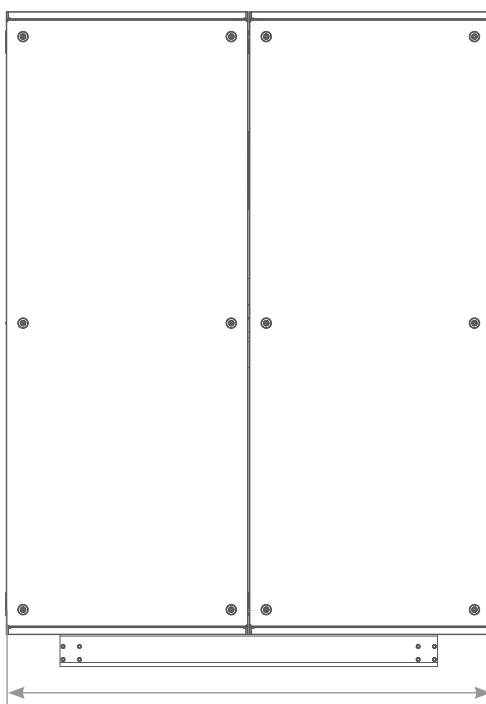
WIRING AND  
CONFIGURATION  
IN PLUG&PLAY  
STANDARD



INTEGRATED  
MULTIFUNCTIONAL  
CONTROLS



MINI-PLEAT  
PANEL FILTERS

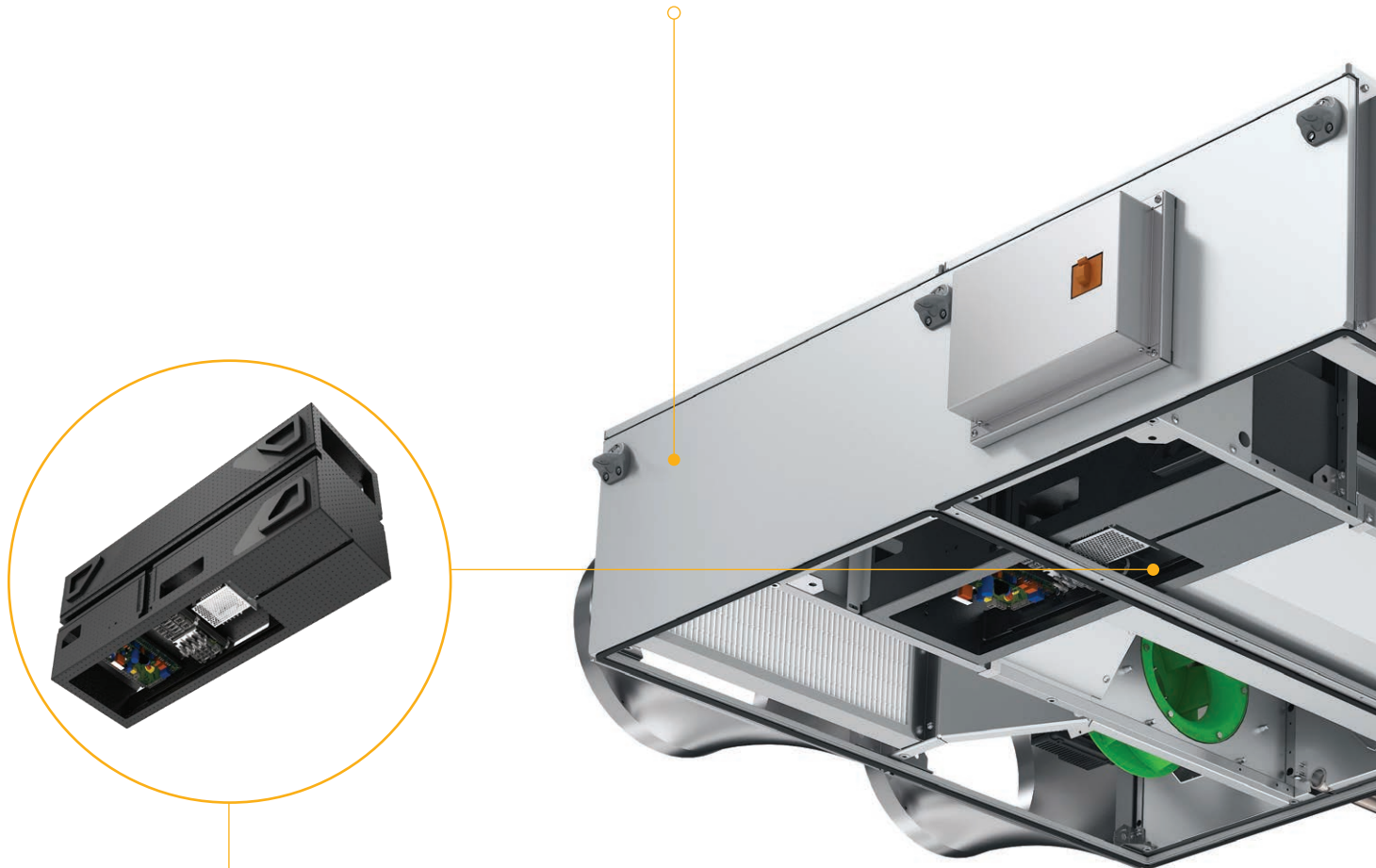


**max. 1400 mm**

# VENTUS COMPACT SUSPENDED AIR HANDLING UNITS

## CASING

- » AZ 150 Aluzinc anti-corrosive coating
- » Rounded and square spigots for easy connecting to ventilation ducts



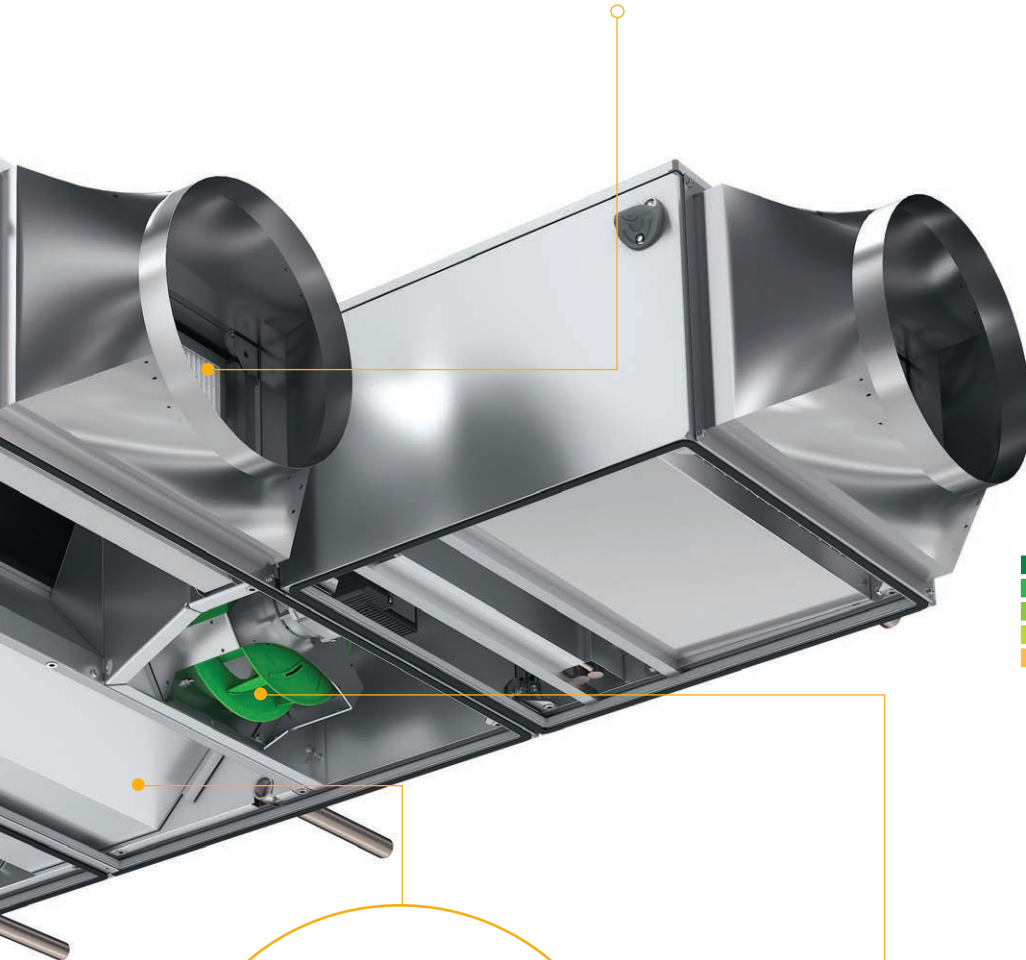
## CONTROLS

Multifunctional controls, integrated with the unit – fully pre-configured and ready to run.

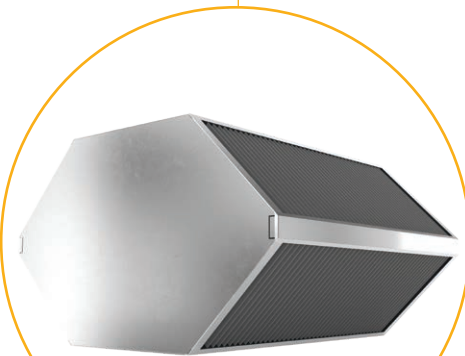
## MINI-PLEAT FILTERS

High performance filters with wide active filtration cross-section.

- » Supply - EU 7 class
- » Exhaust - EU 5 class

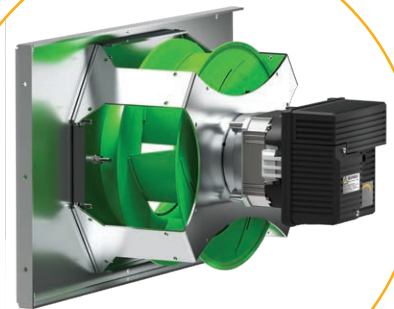


up to **93%**  
drive efficiency



## ENERGY RECOVERY

- » Highly efficient counterflow hex recovery with by-pass.
- » Recovery efficiency reaching 92%



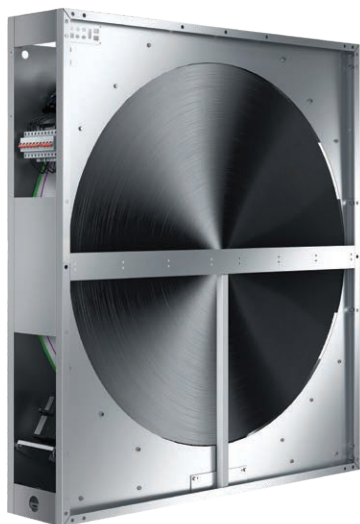
## EC MOTORS

Efficient, silent and low vibrations fan with class IE4 electronically commutated motor.

# VENTUS COMPACT FLOOR-MOUNTED UNITS

## CASING

- » AZ 150 Aluzinc anti-corrosive coating



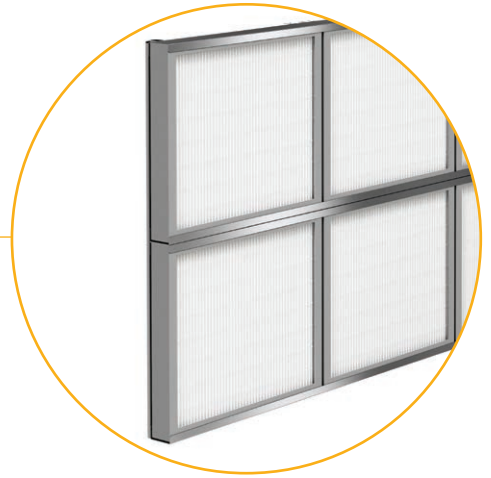
## ENERGY RECOVERY

- » Highly efficient rotary heat wheel driven by EC motor.
- » Recovery efficiency reaching 86%

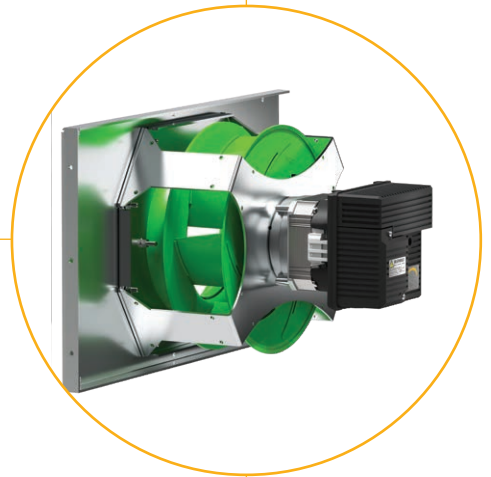
## MINI-PLEAT FILTERS

High performance filters with wide active filtration cross-section.

- » Supply - EU 7 class
- » Exhaust - EU 5 class



up to **93%**  
drive efficiency



## CONTROLS

Multifunctional controls, integrated with the unit – fully pre-configured and ready to run.

## EC MOTORS

Efficient, silent and low vibrations fan with class IE4 electronically commutated motor.


# VENTUS COMPACT

## SUSPENDED AIR HANDLING UNITS

### Common dimensions for all functions

| Unit size | Nominal airflow | Airflow range | Height | Width | Duct connection height | Duct connection width |
|-----------|-----------------|---------------|--------|-------|------------------------|-----------------------|
|           | [m³/h]          | [m³/h]        | [mm]   | [mm]  | [mm]                   | [mm]                  |
| VVS005s   | 500             | 150 - 650     | 380    | 790   | 318                    | 335                   |
| VVS010s   | 1000            | 300 - 1100    | 380    | 1150  | 318                    | 515                   |
| VVS015s   | 1500            | 450 - 1650    | 380    | 1550  | 318                    | 715                   |
| VVS020s   | 2000            | 600 - 2200    | 470    | 1610  | 408                    | 743                   |
| VVS030s   | 3000            | 900 - 3300    | 470    | 2160  | 408                    | 1018                  |

### Lengths of functions

| Unit size |  | F                                  | H         | C         | HC        |
|-----------|--|------------------------------------|-----------|-----------|-----------|
|           | Base unit  | Additional air treatment functions |           |           |           |
|           | [mm]   | [mm]                               | [mm]      | [mm]      | [mm]      |
| VVS005s   | 1230   | 180                                | 180 - 370 | 370 - 460 | 460 - 860 |
| VVS010s   | 1500   | 180                                | 180 - 370 | 370 - 460 | 460 - 860 |
| VVS015s   | 1500   | 180                                | 180 - 370 | 370 - 460 | 460 - 860 |
| VVS020s   | 1828   | 180                                | 180 - 370 | 370 - 460 | 460 - 860 |
| VVS030s   | 1828   | 180                                | 180 - 370 | 370 - 460 | 460 - 860 |

### Duct outfits

| Dimmension WxH [mm] | VVS005s         | VVS010s         | VVS015s         | VVS020s         | VVS030s          |
|---------------------|-----------------|-----------------|-----------------|-----------------|------------------|
| Flexible connection | 305x288         | 485x288         | 685x288         | 730x375         | 1005x375         |
| Air damper          | 305x288         | 485x288         | 685x288         | 730x375         | 1005x375         |
| Rectangle spigot    | 330x310/300x300 | 510x310/400x350 | 710x310/400x350 | 740x400/500x400 | 1015x400/800x400 |
| Rounded spigot      | 330x310/355     | 510x310/355     | 710x310/355     | 740x400/450     | 1015x400/450     |

# VENTUS COMPACT



## FLOOR MOUNTED AIR HANDLING UNITS

Common dimensions for all functions

| Unit size | Nominal airflow | Airflow range | Height | Width | Duct connection height | Duct connection width |
|-----------|-----------------|---------------|--------|-------|------------------------|-----------------------|
|           | [m³/h]          | [m³/h]        | [mm]   | [mm]  | [mm]                   | [mm]                  |
| VVS021c   | 2100            | 840 - 2310    | 991    | 967   | 348                    | 861                   |
| VVS030c   | 3000            | 900 - 3300    | 1255   | 967   | 480                    | 861                   |
| VVS040c   | 4000            | 1200 - 4400   | 1255   | 1174  | 480                    | 1068                  |
| VVS055c   | 5500            | 1650 - 6050   | 1525   | 1345  | 615                    | 1239                  |
| VVS075c   | 7500            | 2250 - 8250   | 1765   | 1486  | 735                    | 1380                  |
| VVS100c   | 10000           | 3000 - 11000  | 1965   | 1666  | 835                    | 1560                  |
| VVS120c   | 12000           | 3600 - 13200  | 2039   | 1897  | 872                    | 1791                  |
| VVS150c   | 15000           | 4500 - 16500  | 2241   | 2091  | 973                    | 1985                  |

Height includes 90 mm base rail

Lengths of base units

| Unit size |  |  |
|-----------|--|--|
|           | [mm]   | [mm]   |
| VVS021c   | 1040   | 1240   |
| VVS030c   | 1120   | 1400   |
| VVS040c   | 1120   | 1400   |
| VVS055c   | 1040   | 1240   |
| VVS075c   | 1120   | 1400   |
| VVS100c   | 1040   | 1240   |
| VVS120c   | 1040   | 1240   |
| VVS150c   | 1040   | 1240   |

Lengths of additional air treatment functions

| Unit size | F    | H         | C         | HC         | S    | E    |
|-----------|------|-----------|-----------|------------|------|------|
|           | [mm] | [mm]      | [mm]      | [mm]       | [mm] | [mm] |
| VVS021c   | 240  | 240 - 420 | 370 - 550 | 550 - 700  | 1080 | 550  |
| VVS030c   | 240  | 240 - 420 | 370 - 550 | 550 - 700  | 1080 | 550  |
| VVS040c   | 240  | 240 - 420 | 370 - 550 | 550 - 700  | 1080 | 550  |
| VVS055c   | 240  | 240 - 420 | 450 - 630 | 630 - 780  | 1080 | 630  |
| VVS075c   | 240  | 240 - 420 | 450 - 630 | 630 - 780  | 1080 | 630  |
| VVS100c   | 240  | 240 - 420 | 650 - 830 | 830 - 980  | 1080 | 650  |
| VVS120c   | 240  | 240 - 420 | 650 - 830 | 830 - 980  | 1080 | 650  |
| VVS150c   | 240  | 240 - 420 | 670 - 850 | 850 - 1000 | 1080 | 670  |

# CLIMACAD ONLINE 4.0 (CCOL 4)

Customized  
configuration

User friendly  
interface



Fast&Easy  
selection

Integrated with CRM,  
ERP, WMA system

CCOL4 IS ADJUSTED FOR

» all browsers



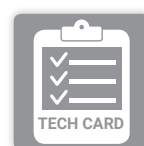
» all operating systems



» all devices

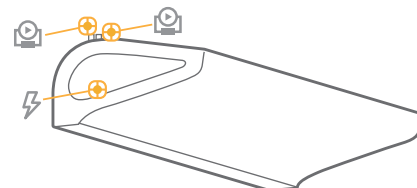
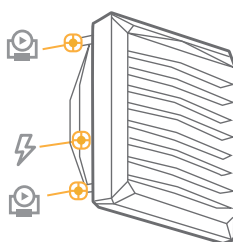
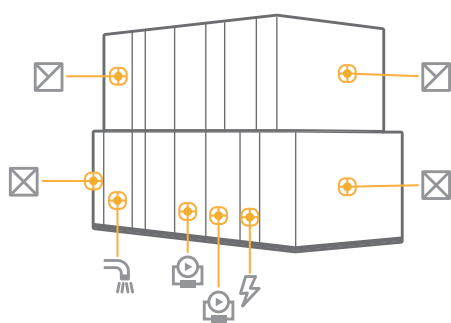
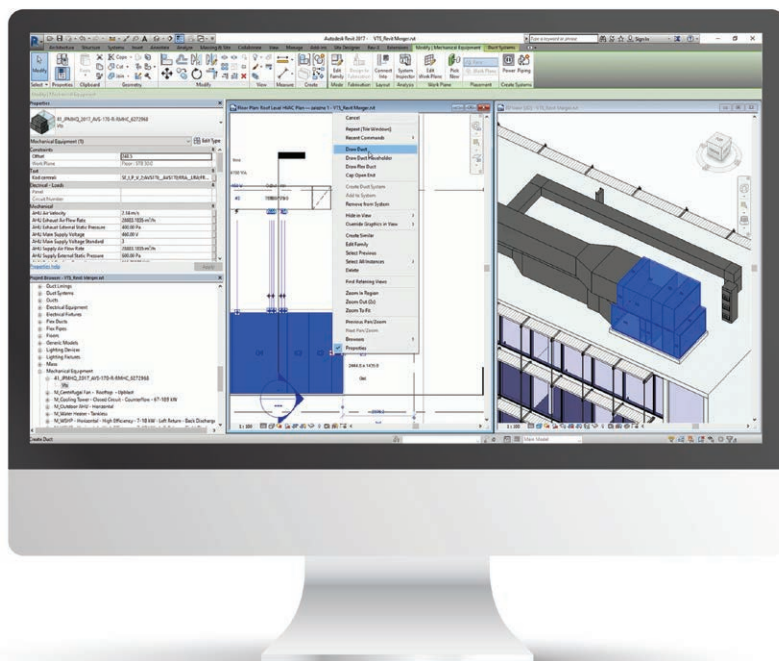


DATA EXPORT TO



# VTs BIM - A NEW APPROACH TO DIGITAL MODELS OF AIR-HANDLING UNITS

VTs has created the possibility of generating digital models of VENTUS VS and American VENTUS air-handling models on-line. This is possible thanks to the implementation of a new ClimaCAD OnLine 4.0 selection tool, equipped with .rfa (Revit®) files generator.



Generated objects contain detailed parameters connectors:

- » **air systems,**
- » **hydraulic systems,**
- » **sanitary systems,**
- » **electric systems,**

as well as the complete dimensional data, including unit's maintenance and service (repair) zone.

VTs also provides digital models of WING air curtains and VOLCANO air heaters.

The models contain:

- » **parametrized electric and hydraulic connectors,**
- » **mount options vertically and horizontally,**
- » **presentation of the range of air stream,**
- » **parameter of any inclination angle of an air heater in relation to the horizontal plane.**

Models can be downloaded from: <http://vtsgroup.com/vtsbim.html>



### **VT S Group Headquarters location and contact**

VT S Group S.A.  
11-13, Boulevard de la Foire,  
L-1528 Luxembourg  
Phone: +35 22 021 18 07-22

VT S sp. z o.o. – producer of VENTUS Air handling units  
VT S Plant sp. z o.o. – producer of VOLCANO heating unit  
and WING air curtain

Address:  
Al. Grunwaldzka 472 A,  
80-309 Gdansk  
Phone: +48 58 628 13 54  
e-mail: vtsgroup@vtsgroup.com

Due to continuous improvement of the products, VT S reserves right to implement modifications.  
Some of technical data and descriptions may vary from the actual products specification.  
Before placing the order, please, confirm all technical specification with VT S sales representative.